



Industrie Service

Laboratory of the ATP-test station TÜV SÜD Industrie Service GmbH



TÜV SÜD Industrie Service GmbH
Refrigeration and Air Conditioning
ATP-Test-Station

Ridlerstr. 57

D-80339 Munich

Tel.: +49 89 5190-3167

Fax: +49 89 5155-1071

E-mail:

kaelte@tuev-sued.de

klima@tuev-sued.de

atp-pruefstelle@tuev-sued.de



Industrie Service

Range of testing and verification services ATP testing facility

Performances

- Inspection of k-value and air leak rate on heat insulated transportations subject to the ATP Agreement and the standard DIN 8958, DIN 8959, DIN E 1815
- Performance of repeated inspections and sight checking on heat insulated transportations subject to the ATP Agreement and the standard DIN 8958, DIN 8959, DIN E 1815
- Capacity determination of transport refrigerators subject to the ATP Agreement and the standards DIN 8958, DIN 8959
- Special certification for transport refrigeration



Industrie Service

- Consultation for cold chains and transportation of foodstuffs
- Inspection of heat insulated transport boxes
- Inspection of air-conditioning systems for application in buses and cars
- Thermal inspections with infra-red heat camera
- Accreditation of temperature registers subject to the standards DIN EN 12830, DIN EN 13485, DIN EN 13486 and the regulation about deep frozen foodstuffs (TLMV)
- Issue of ATP certificates subject to the ATP Agreement for heat insulated transportations that in the international carriage transport perishable foodstuffs

Climatic halls and climatic cabinets

The ATP testing facility includes two additional climatic halls of the following dimensions

Climatic halls	Dimensions L*W*H [m]* [m]* [m]	Volume space [m ³]	Temperature range [°C]	Rel. humidity [%]	Installed refrigerating capacity [kW]	Installed heating capacity [kW]
Room 1	20,60x3,55x3,55	259,6	0 to 50	20 to 95	100	9,6
Room 2	14,00x3,50x3,50	171,5	-40 to 50	20 to 95	350	26

And 3 additional mobile calorimeters.

Main focus of activity is determination of the U-values of transport units for perishable foodstuffs and performance measurement of transport refrigerators.

Climatic and temperature cabinets for temperature range from -40 °C to 160 °C



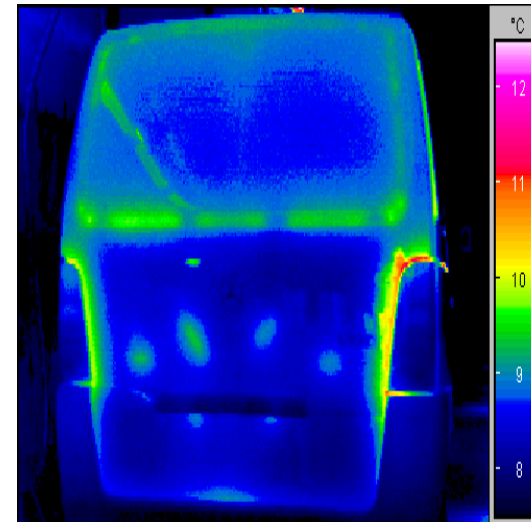
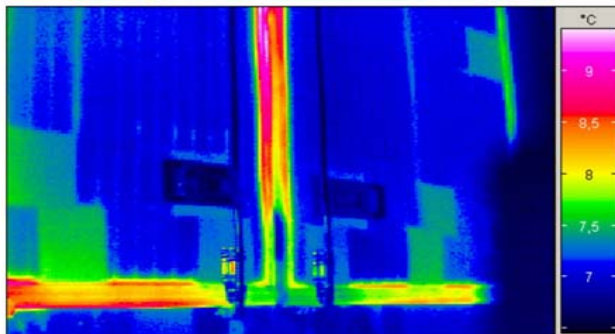
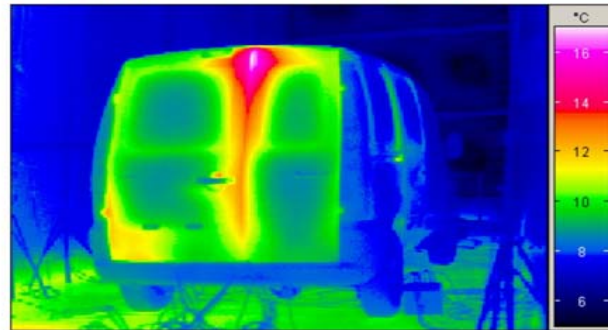
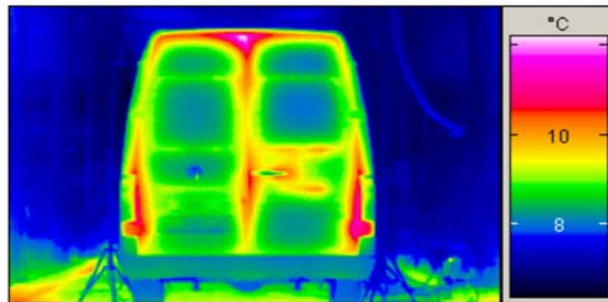
A climatic cabinet (left) and a temperature cabinet (right) are available for testing of small devices, temperature sensors and temperature recording instruments.

Climatic test bench

The special design of this test bench allows performance testing and verification of the economic operation of air conditioning and ventilation systems up to an air volume flow of $15,000\text{ m}^3/\text{h}$.

Volumetric measurement of air intake and exhaust flows is possible in two orifice measuring sections which supply conditioned air from rooms 2 and 3 to the test specimen.

Thermal shoots heat insulated superstructures



Test bench for ATP

(Agreement on the international carriage of perishable foodstuffs and on the special equipment to be used or such carriage)



Test bench for ATP



Heat insulated box wagon



Temperature recorders

